

Help Conserve the Gilman Forest

As seen from Cleveland Hill Road, the Gilman Forest is the slope on the hill in the middle-ground.



The Tamworth Conservation Commission and the Society for the Protection of New Hampshire Forests are partnering to conserve a key 130-acre property within the Whites-to-Ossipees wildlife corridor. This corridor is a rich tapestry of fields, forests, rivers, and marshes connecting the wild areas of the Sandwich Range with the Ossipee Mountains, giving our native wild creatures the space they need to live and breed.

Located next to 895 acres of conserved land, the Gilman Forest is home to moose, bear, otter, mink, and other wildlife. The property and the lands surrounding it have been identified by the NH Fish and Game Department's *Wildlife Action Plan* as including one of the highest priority habitats in the state.

Conserving this critical property will also protect the water quality of Mill Brook, preserve well-managed forestland, and protect the scenic ridge viewscape.

The land contains trails that are part of a network mapped by the Mill Brook Trail Association. By conserving this area, we can ensure continued opportunities for public recreation on the land, such as hiking, cross-country skiing, snowshoeing, fishing, and hunting.

The opportunity we have today will not always be available to us. The Gilman Forest includes 3,045 feet along Durrell Road and 2,500 feet along Mill Brook. Even in a depressed economy, this parcel is a tempting site for development - an occurrence that could compromise wildlife habitat, recreational access, water quality, working woodlands, and scenic views.

We have until May 1, 2010 to raise \$140,000 for the acquisition, conservation, and long-term stewardship of this land. We already have pledges of \$48,000, but we need your help. For more information, visit <http://www.tamworthconservationcommission.org> or contact:

Ned Beecher
Chairman of the Tamworth
Conservation Commission
603-387-7869
info@TamworthConservationCommission.org

John Mersfelder
Chairman of the
Gilman Forest Project
603-323-7793
mhfarm@ncia.net

Jack Savage, VP of Communications
Society for the Protection of New
Hampshire Forests
603-224-9945
jsavage@forestsociety.org

YES, I WANT TO HELP CONSERVE THE GILMAN FOREST.

Name: _____ How you wish to be acknowledged: _____
Address: _____
Town/City: _____ State: _____ Zip: _____
Telephone: _____ Email: _____

Enclosed is my tax-deductible contribution for \$ _____.
(Please make check out to the Town of Tamworth Conservation Fund, with "Gilman Forest" on the memo line.)

Please charge my tax-deductible contribution to my credit card in the amount of \$ _____.
 VISA MasterCard Card number: _____ exp. date: _____
Signature: _____

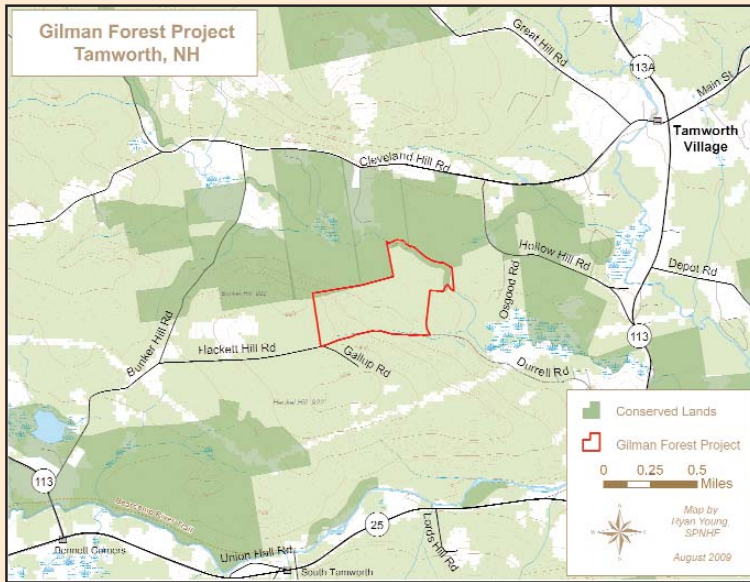
Please mail this completed form to:
Tamworth Conservation Commission
84 Main Street, Tamworth, NH 03886

THANK YOU FOR YOUR HELP!



Gilman Forest

Tamworth, NH



Located next to 895 acres of conserved land, the Gilman Forest is home to moose, bear, otter, mink and other wildlife. The Gilman Forest includes some of the highest priority wildlife habitat in New Hampshire, according to the NH Department of Fish and Game's *Wildlife Action Plan*.

Wildlife habitats were analyzed for the NH *Wildlife Action Plan* maps. Biological factors that were considered include rare plant and animal species and overall biodiversity. Landscape factors include size of habitat and how close it is to other patches of similar habitat. Human impact factors include density of roads, dams, recreation, and pollution.

NH Fish and Game biologists developed filters to show which habitats are in the best ecological condition in the state. These filters are a set of GIS data that show to what degree a certain patch of habitat has good biological diversity (particularly in terms of rare species), is connected to other similar patches in the landscape, and is negatively impacted by humans. For use in conservation planning, the habitats were then ranked to highlight those that were highest ranking in the state and biological region.

